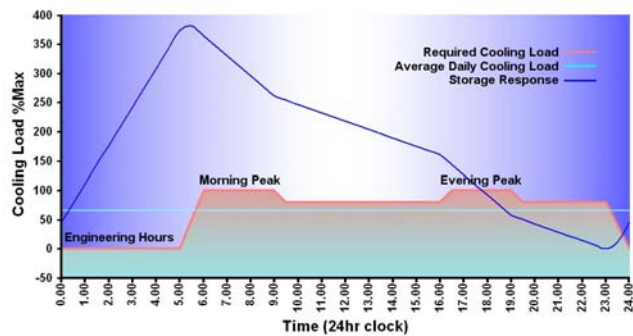
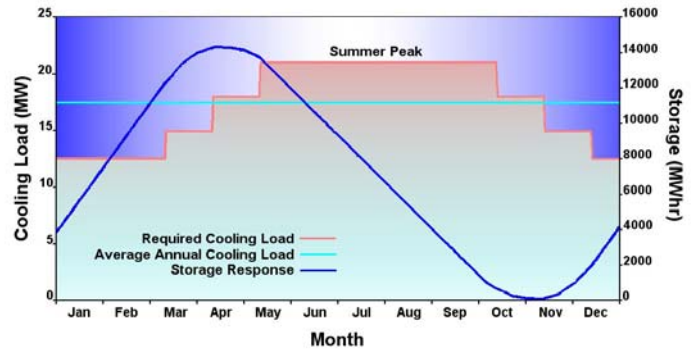
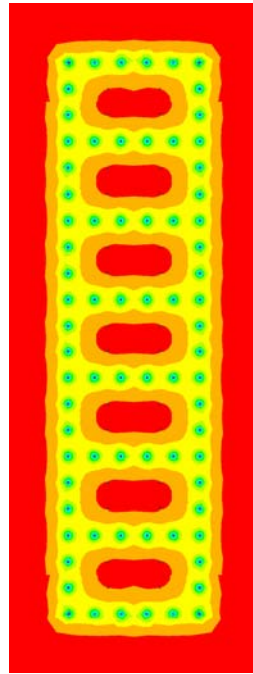


## Deep Tube Cooling via Artificial Ground Freezing



Developed to solve the problem of increasingly elevated temperatures, this novel system would introduce large volumes of cold air into London's underground tube network and deliver significant improvements to passenger comfort. The system works by locally freezing the chalk strata, which is ubiquitous beneath London.

This highly efficient and environmentally advantageous closed-loop system would extract the cold from the frozen chalk which, via heat-exchangers is converted into cold air that can be caught by passing trains. OTB devised and developed the entire scheme.

**Period:** 2005 - current